



- High ripple capability
- Endurance with ripple current:5000hours at 85 °C
- Wide rang of case sizes from Ø50~1000 RoHs compliant
- Applicable to High and low voltage electrical equipment. High and low voltage switch cabinet.



power transformers. digital frequency alternator. Laser phototherapy instrument.

Super energy meter. Fractional laser treatment instrument. Energy slimming instrument.

Body sculpture instrument. Facial sculpture instrument. cell oxygen therapy apparatus. Ovulation tester. monitoring equipment

◆ SPECIFIC ATIONS

items	Characteristics	
Category temperature Range	-25~+85°C	
Rated voltage Range	6.3~550Vdc	
Capacitance Tolerance	± 20% (M) at 20°C/120HZ	
Leakage Current	I=0.02CV or 5mA, whichever is smaller I: Where, I : Max. leakage current (µA)、C: Nominal capacitance (µF)、Rated voltage (V)at 20°Cafter 5 minutes)	
Dissipation Factor (tanδ)	≤0.25 at 20°C/120HZ	
Low Temperature characteristics	Capacitance change(vdc) C (-25°C) /C (+20°C) ≥0.7 at 20°C/120HZ	
Insulation Resistance	When measured between the terminals that are connected to each other and to the mounting clamp on the insulating sleeve covering the case by using an insulation resistance meter of 500Vdc, the insulation resistance shall not be less than 100MΩ	
Insulation Withstanding Voltage	When a voltage of 2,000Vac is applied for 1 minute between the terminals that are connected to each other and to the mounting clamp on the insulating sleeve covering the case, there shall not be electrical damage	
Endurance	The following specifications shall be satisfied when the capacitors are restored to 20°C after subjected to DC voltage with the rated ripple current is applied (the peak voltage shall not exceed the rated voltage) for 5,000 hours at 85°C	
	Capacitance change	≤±20% of the initial value
	D.F. (tanδ)	≤300% of the initial specified value
Shelf Life	The following specifications shall be satisfied when the capacitors are restored to 20°C after exposing them for 1000 hours at 85°C without voltage applied. Before the measurement, the capacitor shall be preconditioned by applying voltage according to Item 4.1 of JIS C 5101-4	
	Capacitance change	≤±20% of the initial value
	D.F. (tanδ)	≤300% of the initial specified value
	Leakage current	≤The initial specified value

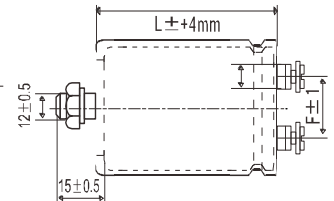
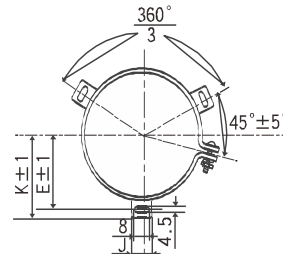
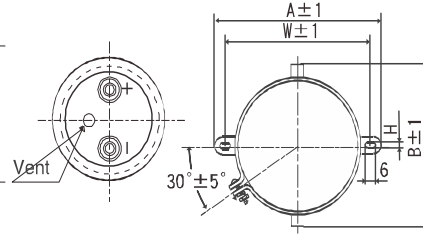
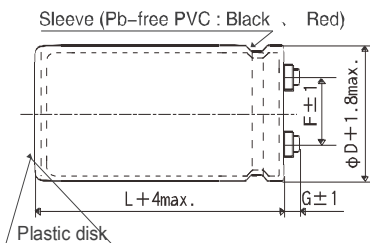
◆ DIMENSIONS[mm]

● Terminal Code : M5

● Mounting Clamp Code : B

● Mounting Clamp Code : C

● NO Mounting Clamp Code : N



Ø35~ Ø63.5: G=6

Ø76.2~ Ø89: G=5

ØD	A	B	W	H	F
35	58.0	44.0	48.0	3.5	12.7
50	78.0	64.0	68.0	4.5	22.4
63.5	90.0	76.0	80.0	4.5	28.0
76.2	104.5	90.0	93.5	4.5	31.5

ØD	E	K	F	J
50	32.5	37.0	14.0	22.4
63.5	38.1	43.5	28.0	14.0
76.2	44.5	50.0	31.5	14.0
89	50.8	56.5	31.5	16.0
100	56.5	63.4	41.5	18.0

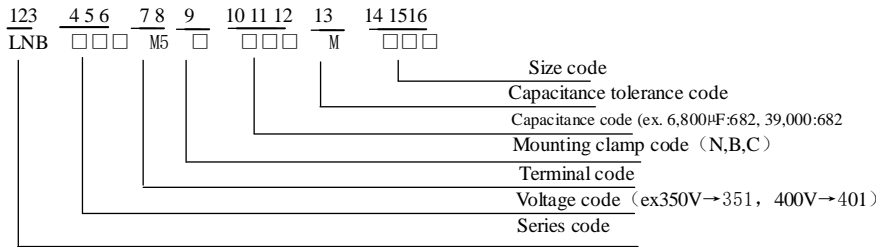
Screw specifications

~ ~ Plus hexagon-headed screw M5*0.8*10 M6*1.0*10 Ø100

Maximum screw tightening torque 3.23N.m The screw and the mounting clamp are separately supplied and not attached to the product



◆OART NUMBERING SYSTEM



Please refer to "Product code guide (screw-mount terminal type)"

SRANDRAD RATINGS

Rated voltage UR [V]	Rated cap. CR [μ F]	Case size D x L [mm]	Typ. ESR 100 Hz, 20° C [mΩ]	Ripple current IR~100 Hz, 85°C [A]	Order code	Rated voltage UR [V]	Rated cap. CR [μ F]	Case size D x L [mm]	Typ. ESR 100 Hz, 20° C [mΩ]	Ripple current IR~100 Hz, 85°C [A]	Order code	
6.3V 8SV	28000	35*40	46.9	4.1	LNB6R3M5B283KA40	6.3V 8SV	780000	76*105	2.9	35.7	LNB6R3M6C784KEA5	
	57000	35*55	26.5	6.1	LNB6R3M5B573KA55		790000	65*140	2.8	37.9	LNB6R3M6C794KDE0	
	68000	35*65	18.8	7.8	LNB6R3M5B683KA65		910000	76*115	2.6	41.0	LNB6R3M6C914KEB5	
	91000	35*80	14.7	9.4	LNB6R3M5B913KA80		1000000	76*130	2.4	44.4	LNB6R3M6C105KED0	
	100000	35*55	18.8	8.8	LNB6R3M5B104KA55		1100000	76*140	2.4	45.0	LNB6R3M6C115KEE0	
	110000	35*90	12.8	11.2	LNB6R3M5B114KA90		1100000	89*105	3.0	41.4	LNB6R3M6C115KFA5	
	120000	35*65	14.3	11.0	LNB6R3M5B124KA65		1200000	76*146	2.4	51.5	LNB6R3M6C125KEE6	
	130000	35*105	11.0	13.0	LNB6R3M5B134KAA5		1200000	89*115	2.6	43.2	LNB6R3M6C125KFB5	
	130000	50*55	14.2	11.9	LNB6R3M5B134KC55		1400000	89*130	2.4	47.1	LNB6R3M6C145KFD0	
	150000	50*65	9.9	11.6	LNB6R3M5B154KC65		1600000	76*192	2.4	49.3	LNB6R3M6C165KEK2	
	160000	35*115	9.8	12.5	LNB6R3M5B164KAB5		1600000	89*140	2.4	47.9	LNB6R3M6C165KFE0	
	160000	35*80	11.0	12.6	LNB6R3M5B164KA80		1700000	89*146	2.4	49.4	LNB6R3M6C175KFE6	
	180000	35*130	8.9	14.7	LNB6R3M5B184KAD0		1900000	76*218	2.4	49.9	LNB6R3M6C195KEN8	
	200000	35*140	8.3	16.0	LNB6R3M5B204KAE0		2300000	89*192	2.4	54.1	LNB6R3M6C235KFK2	
	200000	35*90	9.1	15.9	LNB6R3M5B204KA90		2700000	89*218	2.4	56.5	LNB6R3M6C275KFN8	
	210000	50*80	7.8	17.8	LNB6R3M5B214KC80		10V 12SV	24000	35*40	46.9	4.1	LNB010M5B243KA40
	240000	35*105	7.9	18.3	LNB6R3M5B244KAA5			44000	35*55	26.5	6.1	LNB010M5B443KA55
	260000	50*90	6.5	15.6	LNB6R3M5B264KC90			57000	35*65	26.5	6.1	LNB010M5B573KA65
	260000	65*65	6.9	16.2	LNB6R3M6C264KD65			76000	35*80	15.5	9.2	LNB010M5B763KA80
	280000	35*115	7.0	17.1	LNB6R3M5B284KAB5			79000	35*55	18.8	8.8	LNB010M5B793KA55
310000	50*105	5.6	20.2	LNB6R3M5B314KCA5	96000	35*90		12.8	11.2	LNB010M5B963KA90		
320000	35*130	6.4	19.7	LNB6R3M5B324KAD0	100000	35*65		14.3	11.0	LNB010M5B104KA65		
350000	65*80	5.3	22.6	LNB6R3M6C354KD80	100000	50*55		17.6	10.3	LNB010M5B104KC55		
360000	35*140	6.0	22.0	LNB6R3M5B364KAE0	110000	35*105		11.0	13.5	LNB010M5B114KAA5		
370000	50*115	5.0	24.9	LNB6R3M5B374KCB5	130000	35*115		9.8	10.3	LNB010M5B134KAB5		
420000	50*130	4.5	23.0	LNB6R3M5B424KCD0	140000	35*80		11.0	11.8	LNB010M5B144KA80		
440000	65*90	4.3	25.0	LNB6R3M6C444KD90	140000	50*65		13.4	11.4	LNB010M5B144KC65		
470000	50*140	4.2	26.7	LNB6R3M5B474KCE0	150000	35*130		8.9	14.7	LNB010M5B154KAD0		
520000	76*80	4.1	28.3	LNB6R3M6C524KE80	170000	35*140		8.3	16.0	LNB010M5B174KAE0		
530000	65*105	3.8	30.4	LNB6R3M6C534KDA5	170000	35*90		9.1	15.9	LNB010M5B174KA90		
610000	65*115	3.4	33.4	LNB6R3M6C614KDB5	180000	50*80		10.5	15.4	LNB010M5B184KC80		
650000	76*90	3.3	34.6	LNB6R3M6C654KE90	210000	35*105		7.9	18.3	LNB010M5B214KAA5		
700000	65*130	3.1	33.3	LNB6R3M6C704KDD0	220000	50*90		8.7	13.5	LNB010M5B224KC90		



10V 125V	220000	65*65	8.8	14.4	LNB010M6C224KD65	16V 205V	220000	65*80	6.7	20.0	LNB016M6C224KD80
	240000	35*115	7.0	17.1	LNB010M5B244KAB5		230000	35*140	7.8	19.3	LNB016M5B234KAE0
	270000	50*105	7.5	17.4	LNB010M5B274KCA5		230000	50*115	6.7	21.5	LNB016M5B234KCB5
	280000	35*130	63.4	19.7	LNB010M5B284KAD0		260000	50*130	6.1	19.8	LNB016M5B264KCD0
	290000	65*80	6.7	20.0	LNB010M6C294KD80		270000	65*90	5.5	22.1	LNB016M6C274KD90
	310000	35*140	6.0	22.0	LNB010M5B314KAE0		290000	50*140	5.7	22.9	LNB016M5B294KCE0
	310000	50*115	6.7	21.5	LNB010M5B314KCB5		320000	65*105	5.0	25.6	LNB016M6C324KDA5
	350000	50*130	6.1	19.8	LNB010M5B354KCD0		320000	76*80	4.2	28.9	LNB016M6C324KE80
	370000	65*90	5.5	22.1	LNB010M6C374KD90		380000	65*115	4.6	28.5	LNB016M6C384KDB5
	400000	50*140	5.7	22.9	LNB010M5B404KCE0		400000	76*90	3.6	33.3	LNB016M6C404KE90
	430000	76*80	4.1	28.3	LNB010M6C434KE80		430000	65*130	4.4	27.9	LNB016M6C434KDD0
	440000	65*105	4.8	26.9	LNB010M6C444KDA5		480000	76*105	3.3	33.8	LNB016M6C484KEA5
	510000	65*115	4.3	29.5	LNB010M6C514KDB5		490000	65*140	4.2	31.2	LNB016M6C494KDE0
	540000	76*90	3.3	34.6	LNB010M6C544KE90		560000	76*115	3.1	37.5	LNB016M6C564KEB5
	590000	65*130	3.9	29.5	LNB010M6C594KDD0		650000	76*130	2.8	40.5	LNB016M6C654KED0
	640000	76*105	2.9	35.7	LNB010M6C644KEA5		700000	89*105	2.9	41.6	LNB016M6C704KFA5
	660000	65*140	3.6	33.5	LNB010M6C664KDE0		710000	76*140	2.8	42.8	LNB016M6C714KEE0
	750000	76*115	2.6	41.0	LNB010M6C754KEB5		750000	76*146	2.8	48.3	LNB016M6C754KEE6
	860000	76*130	2.4	44.4	LNB010M6C864KED0		810000	89*115	2.8	42.1	LNB016M6C814KFB5
	900000	89*105	2.9	41.6	LNB010M6C904KFA5		930000	89*130	2.5	46.2	LNB016M6C934KFD0
	940000	76*140	2.3	47.1	LNB010M6C944KEE0		1000000	89*140	2.4	48.3	LNB016M6C105KFE0
	1000000	76*146	2.3	52.8	LNB010M6C105KEE6		1000000	76*192	2.6	47.5	LNB016M6C105KEK2
	1000000	89*115	2.8	42.0	LNB010M6C105KFB5		1500000	89*192	2.3	55.4	LNB016M6C155KFK2
	1200000	89*130	2.5	46.3	LNB010M6C125KFD0		1700000	89*218	2.3	58.2	LNB016M6C175KFN8
	1300000	89*140	2.2	50.3	LNB010M6C135KFE0		12000	35*40	37.1	4.7	LNB025M5B123KA40
	1400000	76*192	2.1	52.7	LNB010M6C145KEK2		20000	35*55	23.6	6.5	LNB025M5B203KA55
	1400000	89*146	2.1	52.7	LNB010M6C145KFE6		24000	35*65	20.1	7.5	LNB025M5B243KA65
	1600000	76*218	2.1	54.2	LNB010M6C165KEN8		33000	35*80	19.3	8.2	LNB025M5B333KA80
1900000	89*192	1.8	64.3	LNB010M6C195KFK2	36000	35*55	21.8	8.2	LNB025M5B363KA55		
2200000	89*218	1.5	70.6	LNB010M6C225KFN8	42000	35*90	19.4	9.1	LNB025M5B423KA90		
16V 205V	21000	35*40	46.9	4.1	LNB016M5B213KA40	43000	35*65	19.4	9.5	LNB025M5B433KA65	
	35000	35*55	26.5	6.1	LNB016M5B353KA55	47000	50*55	21.8	9.3	LNB025M5B473KC55	
	49000	35*65	20.1	7.5	LNB016M5B493KA65	52000	35*105	17.6	10.7	LNB025M5B523KAA5	
	57000	35*55	18.8	8.3	LNB016M5B573KA55	59000	50*65	16.5	9.0	LNB025M5B593KC65	
	62000	35*80	15.5	9.7	LNB016M5B623KA80	60000	35*80	15.2	10.1	LNB025M5B603KA80	
	73000	50*55	17.6	9.5	LNB016M5B733KC55	61000	35*115	16.4	10.3	LNB025M5B613KAB5	
	76000	35*90	12.8	11.7	LNB016M5B763KA90	71000	35*130	15.2	11.3	LNB025M5B713KAD0	
	77000	35*65	15.3	11.1	LNB016M5B773KA65	76000	50*80	12.2	13.2	LNB025M5B763KC80	
	90000	35*105	11.0	13.5	LNB016M5B903KAA5	77000	35*90	12.8	13.4	LNB025M5B773KA90	
	99000	35*115	9.8	11.6	LNB016M5B993KAB5	80000	35*140	14.0	13.3	LNB025M5B803KAE0	
	100000	35*80	12.5	11.1	LNB016M5B104KA80	90000	65*65	9.5	16.7	LNB025M6C903KD65	
	110000	35*130	8.9	14.0	LNB016M5B114KAD0	94000	35*105	10.2	14.2	LNB025M5B943KAA5	
	110000	50*65	13.4	12.0	LNB016M5B114KC65	98000	50*90	9.8	13.6	LNB025M5B983KC90	
	130000	35*140	8.3	16.0	LNB016M5B134KAE0	110000	35*115	10.2	14.2	LNB025M5B114KAB5	
	130000	35*90	10.9	14.6	LNB016M5B134KA90	120000	50*105	8.3	16.6	LNB025M5B124KCA5	
	130000	50*80	10.5	15.4	LNB016M5B134KC80	130000	35*130	9.6	16.1	LNB025M5B134KAD0	
	150000	35*105	9.7	16.5	LNB016M5B154KAA5	130000	65*80	7.6	18.9	LNB025M6C134KD80	
	160000	50*90	8.7	13.5	LNB016M5B164KC90	140000	50*115	7.3	19.9	LNB025M5B144KCB5	
	160000	65*65	8.8	14.4	LNB016M6C164KD65	150000	35*140	9.1	18.4	LNB025M5B154KAE0	
	180000	35*115	8.8	15.3	LNB016M5B184KAB5	160000	50*130	6.6	19.1	LNB025M5B164KCD0	
	200000	50*105	7.5	17.4	LNB016M5B204KCA5	160000	65*90	6.4	20.5	LNB025M6C164KD90	
	210000	35*130	8.2	17.5	LNB016M5B214KAD0	190000	50*140	6.1	22.2	LNB025M5B194KCE0	



25V 30SV	190000	76*80	5.0	25.5	LNB025M6C194KE80	35V 40SV	190000	65*130	6.8	22.3	LNB035M6C194KDD0
	200000	65*105	5.8	24.6	LNB025M6C204KDA5		210000	65*140	6.1	24.7	LNB035M6C214KDE0
	230000	65*115	5.2	26.8	LNB025M6C234KDB5		210000	76*105	5.2	28.0	LNB035M6C214KEA5
	240000	76*90	4.3	30.5	LNB025M6C244KE90		240000	76*115	4.5	30.5	LNB035M6C244KEB5
	270000	65*130	5.0	26.0	LNB025M6C274KDD0		280000	76*130	4.4	32.6	LNB035M6C284KED0
	300000	76*105	3.9	31.0	LNB025M6C304KEA5		300000	89*105	4.9	31.7	LNB035M6C304KFA5
	310000	65*140	4.6	29.8	LNB025M6C314KDE0		320000	76*140	4.0	35.5	LNB035M6C324KEE0
	350000	76*115	3.5	35.1	LNB025M6C354KEB5		340000	76*146	3.9	40.9	LNB035M6C344KEE6
	400000	76*130	3.3	37.5	LNB025M6C404KED0		350000	89*115	4.5	33.0	LNB035M6C354KFB5
	430000	89*105	3.8	36.0	LNB025M6C434KFA5		410000	89*130	4.0	36.2	LNB035M6C414KFD0
	460000	76*140	3.2	39.9	LNB025M6C464KEE0		460000	89*140	3.6	39.2	LNB035M6C464KFE0
	490000	76*146	3.1	46.0	LNB025M6C494KEE6		470000	76*192	3.8	39.8	LNB035M6C474KEK2
	500000	89*115	3.5	37.6	LNB025M6C504KFB5		490000	89*146	3.5	41.1	LNB035M6C494KFE6
	580000	89*130	3.2	40.3	LNB025M6C584KFD0		550000	76*218	3.6	40.9	LNB035M6C554KEN8
	660000	89*140	3.1	42.8	LNB025M6C664KFE0		680000	89*192	3.4	45.7	LNB035M6C684KFK2
	670000	76*192	3.1	44.0	LNB025M6C674KEK2		790000	89*218	3.3	48.4	LNB035M6C794KFN8
	700000	89*146	2.9	44.9	LNB025M6C704KFE6		5900	35*40	47.9	4.1	LNB050M5B592KA40
	780000	76*218	3.0	44.9	LNB025M6C784KEN8		10000	35*55	30.9	5.6	LNB050M5B103KA55
	950000	89*192	3.0	48.7	LNB025M6C954KFK2		12000	35*65	25.9	6.7	LNB050M5B123KA65
	1100000	89*218	2.9	51.1	LNB025M6C115KFN8		16000	35*80	23.6	7.4	LNB050M5B163KA80
35V 40SV	8200	35*40	41.7	4.4	LNB035M5B822KA40	18000	35*55	22.8	8.0	LNB050M5B193KA55	
	14000	35*55	26.7	6.1	LNB035M5B143KA55	21000	35*90	19.6	9.0	LNB050M5B213KA90	
	16000	35*65	23.2	7.0	LNB035M5B163KA65	21000	35*65	20.2	9.3	LNB050M5B213KA65	
	23000	35*80	21.9	7.7	LNB035M5B233KA80	23000	50*55	25.3	8.6	LNB050M5B233KC55	
	25000	35*55	22.3	8.1	LNB035M5B253KA55	26000	35*105	18.7	10.4	LNB050M5B263KAA5	
	30000	35*90	21.6	8.6	LNB035M5B303KA65	29000	50*65	20.8	8.0	LNB050M5B293KC65	
	30000	35*65	19.2	9.5	LNB035M5B303KA65	30000	35*80	15.6	9.9	LNB050M5B303KA80	
	32000	50*55	24.5	8.8	LNB035M5B323KC55	31000	35*115	17.9	9.9	LNB050M5B313KAB5	
	36000	35*105	20.1	10.0	LNB035M5B363KAA5	35000	35*130	15.9	11.0	LNB050M5B353KAD0	
	41000	50*65	20.1	8.1	LNB035M5B413KC65	38000	35*90	13.5	12.5	LNB050M5B383KA90	
	42000	35*80	15.5	10.0	LNB035M5B423KA80	38000	50*80	16.3	11.9	LNB050M5B383KC80	
	43000	35*115	17.8	9.9	LNB035M5B433KAB5	40000	35*140	14.4	13.1	LNB050M5B403KAE0	
	49000	35*130	15.5	11.2	LNB035M5B493KAD0	45000	65*65	14.4	13.1	LNB050M6C453KD65	
	53000	50*80	15.9	11.6	LNB035M5B533KC80	47000	35*105	12.0	11.4	LNB050M5B473KAA5	
	54000	35*90	13.2	13.2	LNB035M5B543KA90	49000	50*90	13.6	11.6	LNB050M5B493KC90	
	56000	35*140	14.1	13.3	LNB035M5B563KAE0	56000	35*115	10.8	13.8	LNB050M5B563KAB5	
	63000	65*65	14.8	13.4	LNB035M6C633KD65	60000	50*105	11.9	13.8	LNB050M5B603KCA5	
	66000	35*105	11.8	11.5	LNB035M5B663KAA5	63000	65*80	12.0	14.4	LNB050M6C633KD80	
	69000	50*90	13.2	11.7	LNB035M5B693KC90	64000	35*130	9.8	16.6	LNB050M5B643KAD0	
	78000	35*115	10.6	13.9	LNB035M5B783KAB5	71000	50*115	10.8	16.4	LNB050M5B713KCB5	
	84000	50*105	11.6	14.0	LNB035M5B843KCA5	73000	35*140	9.5	18.0	LNB050M5B733KAE0	
	88000	65*80	11.5	14.7	LNB035M6C883KD80	81000	65*90	10.3	15.2	LNB050M6C813KD90	
	90000	35*130	9.8	16.6	LNB035M5B903KAD0	82000	50*130	10.0	16.4	LNB050M5B823KCD0	
	99000	50*115	10.5	16.6	LNB035M5B993KCB5	93000	50*140	9.5	17.7	LNB050M5B933KE0	
	100000	35*140	9.4	18.1	LNB035M5B104KAE0	94000	76*80	9.1	18.9	LNB050M6C943KE80	
	110000	50*130	9.8	15.6	LNB035M5B114KCD0	99000	65*105	8.9	19.8	LNB050M6C993KDA5	
	110000	65*90	9.4	16.9	LNB035M6C114KD90	120000	65*115	7.9	21.8	LNB050M6C124KDB5	
	130000	50*140	9.4	17.9	LNB035M5B134KCE0	120000	76*90	7.7	22.7	LNB050M6C124KE90	
	130000	76*80	6.9	21.8	LNB035M6C134KE80	130000	65*130	7.2	21.7	LNB050M6C134KDD0	
	140000	65*105	8.2	20.6	LNB035M6C144KDA5	150000	65*115	6.7	23.7	LNB050M6C154KDB5	
160000	65*115	7.4	22.5	LNB035M6C164KDB5	150000	76*105	6.9	24.2	LNB050M6C154KEA5		
170000	76*90	5.7	26.4	LNB035M6C174KE90	170000	76*115	6.1	26.7	LNB050M6C174KEB5		



50V 65SV	200000	76*130	5.9	28.1	LNB050M6C204KED0	63V 75SV	160000	76*146	7.5	25.5	LNB063M6C164KEE6
	200000	89*105	6.4	27.9	LNB050M6C204KFA5		180000	89*130	7.9	25.7	LNB063M6C184KFD0
	230000	76*140	5.6	30.0	LNB050M6C234KEE0		200000	89*140	7.2	28.0	LNB063M6C204KFE0
	230000	89*115	5.7	33.8	LNB050M6C234KFB5		210000	89*146	6.8	29.4	LNB063M6C214KFE6
	240000	76*146	5.4	30.2	LNB050M6C244KEE6		230000	76*192	6.5	31.2	LNB063M6C234KEK2
	270000	89*130	5.4	31.3	LNB050M6C274KFD0		250000	76*218	5.7	32.6	LNB063M6C254KEN8
	310000	89*140	5.1	33.2	LNB050M6C314KFE0		300000	89*192	5.8	35.3	LNB063M6C304KFK2
	320000	89*146	4.9	34.8	LNB050M6C324KFE6		350000	89*218	5.2	38.5	LNB063M6C354KFN8
	350000	76*192	4.5	37.5	LNB050M6C354KEK2		3200	35*40	76.2	3.2	LNB075M5B322KA40
	390000	76*218	4.1	38.6	LNB050M6C394KEN8		5300	35*55	50.7	4.4	LNB075M5B532KA55
	450000	89*192	4.2	41.3	LNB050M6C454KFK2		6400	35*65	41.7	5.2	LNB075M5B642KA65
	520000	89*218	3.8	44.9	LNB050M6C524KFN8		9000	35*80	38.6	5.8	LNB075M5B902KA80
63V 75SV	4100	35*40	60.6	3.6	LNB063M5B412KA40	9900	35*55	55.6	5.1	LNB075M5B992KA55	
	7000	35*55	39.0	5.0	LNB063M5B702KA55	12000	35*90	34.3	6.8	LNB075M5B123KA90	
	8300	35*65	32.7	5.9	LNB063M5B832KA65	12000	35*65	47.3	6.1	LNB075M5B123KA65	
	12000	35*80	28.6	6.8	LNB063M5B123KA80	12000	50*55	34.8	7.4	LNB075M5B123KC55	
	13000	35*55	27.9	7.2	LNB063M5B133KA55	14000	35*105	30.5	8.1	LNB075M5B143KAA5	
	15000	35*90	26.1	7.8	LNB063M5B153KA90	14000	50*65	27.5	6.9	LNB075M5B143KC65	
	15000	35*65	25.6	8.2	LNB063M5B153KA65	16000	35*80	34.1	6.7	LNB075M5B163KA80	
	15000	50*55	28.0	8.2	LNB063M5B153KC55	17000	35*115	26.2	8.2	LNB075M5B173KAB5	
	18000	35*105	22.0	9.6	LNB063M5B183KAA5	19000	35*130	23.8	9.0	LNB075M5B193KAD0	
	18000	50*65	22.6	7.7	LNB063M5B183KC65	19000	50*80	21.4	10.0	LNB075M5B193KC80	
	21000	35*115	19.3	8.9	LNB063M5B213KAB5	21000	35*90	26.9	9.3	LNB075M5B213KA90	
	21000	35*80	19.5	9.4	LNB063M5B213KA80	22000	35*140	21.4	10.8	LNB075M5B223KAE0	
	25000	35*130	17.3	10.6	LNB063M5B253KAD0	23000	65*65	30.0	9.4	LNB075M6C233KD65	
	25000	50*80	18.1	10.8	LNB063M5B253KC80	25000	50*90	18.0	9.3	LNB075M5B253KC90	
	27000	35*90	16.2	11.9	LNB063M5B273KA90	26000	35*105	22.3	9.0	LNB075M5B263KAA5	
	28000	35*140	15.8	12.5	LNB063M5B283KAE0	30000	35*115	19.2	10.4	LNB075M5B303KAB5	
	29000	65*65	26.8	9.9	LNB063M6C293KD05	30000	50*105	15.6	12.1	LNB075M5B303KCA5	
	32000	50*90	15.1	10.2	LNB063M5B323KC90	32000	65*80	21.6	10.7	LNB075M6C323KD80	
	33000	35*105	14.2	11.3	LNB063M5B333KAA5	35000	35*130	16.9	12.6	LNB075M5B353KAD0	
	39000	35*115	12.8	12.7	LNB063M5B393KAB5	35000	50*115	13.9	14.4	LNB075M5B353KCB5	
	39000	50*105	13.3	13.1	LNB063M5B393KCA5	40000	35*140	15.2	14.3	LNB075M5B403KAE0	
	41000	65*80	19.3	11.4	LNB063M6C413KD80	41000	50*130	12.8	13.7	LNB075M5B413KCD0	
	45000	35*130	11.8	15.1	LNB063M5B453KAD0	41000	65*90	17.8	12.3	LNB075M6C413KD90	
	46000	50*115	12.1	15.5	LNB063M5B463KCB5	46000	50*140	12.0	15.8	LNB075M5B463KCE0	
	51000	35*140	11.2	16.6	LNB063M5B513KAE0	47000	76*80	18.0	13.4	LNB075M6C473KE80	
	52000	65*90	17.1	11.8	LNB063M6C523KD90	50000	65*105	15.1	15.2	LNB075M6C503KDA5	
	53000	50*130	11.3	15.5	LNB063M5B533KCD0	59000	65*115	13.5	16.7	LNB075M6C593KDB5	
	60000	50*140	10.7	16.7	LNB060M5B603KCE0	61000	76*90	14.4	16.6	LNB075M6C613KE90	
	61000	76*80	14.9	14.8	LNB063M6C613KE80	68000	65*130	12.0	16.8	LNB075M6C683KDD0	
	64000	65*105	13.7	16.0	LNB063M6C643KDA5	74000	76*105	12.9	17.0	LNB075M6C743KES5	
	76000	65*115	11.8	17.8	LNB063M6C763KDB5	77000	65*140	11.2	19.0	LNB075M6C773KDE0	
	78000	76*90	12.1	18.1	LNB063M6C783KE90	88000	76*115	11.8	19.2	LNB075M6C883KEB5	
	87000	65*130	11.0	17.6	LNB063M6C873KDD0	100000	76*130	10.4	21.1	LNB075M6C104KED0	
	95000	76*105	10.8	18.6	LNB063M6C953KEA5	100000	89*105	11.8	20.4	LNB075M6C104KFA5	
	99000	65*140	10.5	19.7	LNB063M6C993KDE0	110000	76*140	9.4	23.3	LNB075M6C114KEE0	
	110000	76*115	9.9	21.0	LNB063M6C114KEB5	120000	76*146	8.9	26.9	LNB075M6C124KEE6	
130000	76*130	8.8	23.0	LNB063M6C134KED0	120000	89*115	10.7	21.4	LNB075M6C124KFB5		
130000	89*105	9.9	22.3	LNB063M6C134KFA5	140000	89*130	9.4	23.7	LNB075M6C144KFD0		
150000	76*140	7.9	25.3	LNB063M6C154KEE0	160000	89*140	8.4	25.7	LNB075M6C164KFE0		
150000	89*115	9.0	26.8	LNB063M6C154KFB5	170000	76*192	7.7	28.1	LNB075M6C174KEK2		



75V 95SV	170000	89*146	8.1	27.1	LNB075M6C174KFE6	160V 200SV	1100	35*40	149.6	2.3	LNB160M5B112KA40
	200000	76*218	6.8	29.8	LNB075M6C204KEN8		1800	35*55	93.0	3.3	LNB160M5B182KA55
	230000	89*192	6.9	32.3	LNB075M6C234KFK2		2300	35*65	70.5	4.0	LNB160M5B232KA65
	270000	89*218	6.2	35.2	LNB075M6C274KFN8		3200	35*80	58.5	4.7	LNB160M5B322KA80
100V 125SV	1900	35*40	98.4	2.9	LNB100M5B192KA40		3500	35*55	62.0	4.8	LNB160M5B352KA55
	3100	35*55	60.2	4.0	LNB100M5B312KA55		3700	50*55	70.5	4.8	LNB160M5B372KC55
	3900	35*65	51.0	4.7	LNB100M5B392KA65		4100	35*90	50.2	5.9	LNB160M5B412KA90
	5500	35*80	43.4	5.5	LNB100M5B552KA80		4100	35*65	52.8	6.0	LNB160M5B412KA65
	6000	35*55	62.0	4.8	LNB100M5B602KA55		5000	35*105	42.9	6.9	LNB160M5B502KAA5
	6300	50*55	51.8	5.6	LNB100M5B632KC55		5300	50*65	46.5	5.3	LNB160M5B532KC65
	7000	35*90	36.5	6.9	LNB100M5B702KA90		5800	35*80	38.0	6.4	LNB160M5B582KA80
	7100	35*65	52.8	6.0	LNB100M5B712KA65		5900	35*115	37.7	6.8	LNB160M5B592KAB5
	8600	35*105	33.3	7.8	LNB100M5B862KAA5		6800	35*130	34.7	7.5	LNB160M5B682KAD0
	9000	50*65	37.8	5.9	LNB100M5B902KC65		7400	35*90	29.9	8.4	LNB160M5B742KA90
	9900	35*80	38.0	6.4	LNB100M5B992KC80		7400	50*80	33.5	8.3	LNB160M5B742KC80
	10000	35*115	31.1	7.5	LNB100M5B103KAB5		7700	35*140	32.2	8.8	LNB160M5B772KAE0
	12000	35*130	30.0	8.0	LNB100M5B123KAD0		8300	65*65	30.1	9.4	LNB160M6C832KD65
	13000	35*140	29.0	8.6	LNB100M5B133KAE0		9100	35*105	24.8	8.0	LNB160M5B912KAA5
	13000	35*90	29.9	8.8	LNB100M5B133KA90		9500	50*90	26.4	8.3	LNB160M5B952KC90
	13000	50*80	30.6	9.0	LNB100M5B133KC80		11000	35*115	21.2	9.8	LNB160M5B113KAB5
	15000	65*65	33.7	8.9	LNB100M6C153KD65		12000	35*130	18.7	11.0	LNB160M5B123KAD0
	16000	35*105	24.8	8.0	LNB100M5B163KAA5		12000	50*105	21.9	10.7	LNB160M5B123KCA5
	16000	50*90	22.3	9.0	LNB100M5B163KC90		12000	65*80	21.3	11.2	LNB160M6C123KD80
	18000	35*115	21.2	9.8	LNB100M5B183KAB5		14000	35*140	16.8	13.1	LNB160M5B143KAE0
	20000	50*105	19.9	10.7	LNB100M5B203KCA5		14000	50*115	18.8	12.8	LNB160M5B143KCB5
	21000	35*130	18.7	11.5	LNB100M5B213KAD0		15000	65*90	17.0	11.9	LNB160M6C153KD90
	21000	65*80	23.4	10.7	LNB100M6C213KD80		16000	50*130	16.6	12.8	LNB160M5B163KCD0
	23000	50*115	17.7	12.8	LNB100M5B233KCB5		17000	76*80	14.7	14.3	LNB160M6C173KE80
	24000	35*140	16.8	13.6	LNB100M5B243KAE0		18000	50*140	14.9	14.8	LNB160M5B183KCE0
	27000	50*130	15.6	12.4	LNB100M5B273KCD0		18000	65*105	14.1	15.8	LNB160M6C183KDA5
	27000	65*90	19.1	11.9	LNB100M6C273KD90		22000	65*115	11.9	17.8	LNB160M6C223KDB5
	31000	50*140	14.9	14.1	LNB100M5B313KCE0		22000	76*90	11.5	18.6	LNB160M6C223KE90
	31000	76*80	19.9	12.8	LNB100M6C313KE80		25000	65*130	10.7	17.8	LNB160M6C253KDD0
	33000	65*105	16.5	14.6	LNB100M6C333KDA5		27000	76*105	9.6	19.7	LNB160M6C273KEA5
	39000	65*115	14.7	16.0	LNB100M6C393KDB5		28000	65*140	9.6	20.5	LNB160M6C283KDE0
	40000	76*90	16.4	15.6	LNB100M6C403KE90		32000	76*115	8.2	23.0	LNB160M6C323KEB5
	45000	65*130	13.4	15.9	LNB100M6C453KDD0		37000	76*130	7.3	25.3	LNB160M6C373KED0
	49000	76*105	14.4	16.1	LNB100M6C493KEA5		37000	89*105	9.2	23.2	LNB160M6C373KFA5
	51000	65*140	12.5	18.0	LNB100M6C513KDE0		42000	76*140	6.5	27.9	LNB160M6C423KEE0
	58000	76*115	13.0	18.3	LNB100M6C583KEB5		44000	89*115	7.9	28.6	LNB160M6C443KFB5
	67000	76*130	12.0	19.7	LNB100M6C673KED0		45000	76*146	6.2	28.1	LNB160M6C453KEE6
	67000	89*105	13.4	19.2	LNB100M6C673KFA5		51000	89*130	6.9	27.5	LNB160M6C513KFD0
	76000	76*140	11.2	21.3	LNB100M6C763KEE0		58000	89*140	6.2	30.0	LNB160M6C583KFE0
	79000	89*115	12.1	23.1	LNB100M6C793KFB5		61000	89*146	5.9	31.6	LNB160M6C613KFE6
	80000	76*146	11.1	21.0	LNB100M6C803KEE6		62000	76*192	5.1	34.9	LNB160M6C623KEK2
	92000	89*130	10.9	22.0	LNB100M6C923KFD0		72000	76*218	4.3	37.5	LNB160M6C723KEN8
	100000	89*140	10.2	23.4	LNB100M6C104KFE0		85000	89*192	4.9	38.8	LNB160M6C853KFK2
	110000	76*192	9.2	25.8	LNB100M6C114KEK2		99000	89*218	4.2	42.8	LNB160M6C993KFN8
	110000	89*146	10.0	24.3	LNB100M6C114KFE6	200V	680	35*40	205.8	2.0	LNB200M5B681KA40
	130000	76*218	8.2	27.3	LNB100M6C134KEN8	250SV	1000	35*55	140.3	2.6	LNB200M5B102KA55
	150000	89*192	8.3	29.5	LNB100M6C154KFK2	1500	35*65	100.5	3.4	LNB200M5B152KA65	
	180000	89*218	7.3	32.3	LNB100M6C184KFN8	1800	35*80	78.5	4.1	LNB200M5B182KA80	



200V 250SV	1900	35*55	79.1	4.3	LNB200M5B192KA55	250V 300SV	2300	35*105	57.9	5.9	LNB250M5B232KAA5
	2200	35*90	63.9	5.0	LNB200M5B222KA90		2300	35*80	61.3	4.6	LNB250M5B232KA80
	2400	35*65	62.5	5.3	LNB200M5B242KA65		2400	35*115	51.4	5.5	LNB250M5B242KAB5
	2500	50*55	82.0	4.8	LNB200M5B252KC55		2500	50*65	65.7	5.2	LNB250M5B252KC65
	2700	35*105	51.7	6.2	LNB200M5B272KAA5		2700	35*130	48.7	6.6	LNB250M5B272KAD0
	3100	35*80	48.4	5.2	LNB200M5B312KA80		3000	35*90	48.7	6.6	LNB250M5B302KA90
	3300	35*115	43.2	6.0	LNB200M5B332KAB5		3300	50*80	46.2	7.1	LNB250M5B331KC80
	3300	50*65	61.0	5.3	LNB200M5B332KC65		3400	35*140	38.3	8.0	LNB250M5B342KAE0
	3800	35*90	37.9	7.2	LNB200M5B382KA90		3700	35*105	40.5	8.1	LNB250M5B372KAA5
	3900	35*130	37.8	7.5	LNB200M5B392KAD0		3900	35*115	34.8	6.7	LNB250M5B392KAB5
	4300	50*80	46.1	7.1	LNB200M5B432KC80		3900	50*90	38.2	6.9	LNB250M5B392KC90
	4500	35*140	33.4	8.6	LNB200M5B452KAE0		4100	65*65	51.8	6.3	LNB250M6C412KD65
	4600	35*105	31.3	9.2	LNB200M5B462KAA5		4500	35*130	30.6	8.6	LNB025M5B452KAD0
	5400	35*115	26.8	7.7	LNB200M5B542KAB5		4700	50*105	31.5	8.9	LNB250M5B472KCA5
	5500	65*65	42.2	6.6	LNB200M6C552KD65		5000	35*140	27.3	9.9	LNB250M5B502KAE0
	5600	50*90	36.2	7.5	A1200M5B562KC90		5200	65*80	32.1	9.5	LNB250M6C522KD80
	6100	35*130	23.5	9.9	LNB200M5B612KAD0		5600	50*115	26.9	10.7	LNB250M5B562KCB5
	6900	35*140	21.0	10.9	LNB200M5B692KAE0		6200	50*130	23.6	10.1	LNB250M5B622KCD0
	6900	50*105	28.5	9.7	LNB200M5B692KCA5		6400	65*90	25.1	10.4	LNB250M6C642KD90
	7100	65*80	31.2	9.6	LNB200M6C712KD80		6800	50*140	21.2	11.9	LNB250M5B682KCE0
	8200	50*115	24.4	11.2	LNB200M5B822KCB5		7800	76*80	27.6	10.9	LNB250M6C782KE80
	9100	50*130	21.7	10.5	LNB200M5B912KCD0		8200	65*105	20.8	13.0	LNB250M6C822KDA5
	10000	50*140	19.6	11.7	LNB200M5B103KCE0		10000	65*115	17.8	14.5	LNB250M6C103KDB5
	10000	65*90	22.3	11.6	LNB200M6C103KD90		10000	76*90	21.6	13.6	LNB250M6C103KE90
	11000	65*105	20.3	12.7	LNB200M6C113KDA5		11000	65*130	15.5	14.8	LNB250M6C113KDD0
	11000	76*80	30.3	10.8	LNB200M6C113KE80		12000	65*140	13.8	16.5	LNB250M6C123KDE0
	12000	65*115	17.3	14.7	LNB200M6C123KDB5		12000	76*105	17.6	15.2	LNB250M6C123KEA5
	13000	65*130	15.8	15.9	LNB200M6C133KDD0		13000	76*115	16.3	16.4	LNB250M6C133KEB5
	13000	76*90	23.7	12.0	LNB200M6C133KE90		15000	76*130	14.3	18.0	LNB250M6C153KED0
	15000	65*140	13.7	16.5	LNB200M6C153KDE0		16000	89*105	19.5	15.9	LNB250M6C163KFA5
	15000	76*105	19.7	14.3	LNB200M6C153KEA5		18000	76*140	12.0	20.6	LNB250M6C183KEE0
	18000	76*115	16.9	16.1	LNB200M6C183KEB5		18000	89*115	17.1	19.4	LNB250M6C183KFB5
	21000	89*105	17.1	16.5	LNB200M6C213KFA5		19000	76*146	11.5	20.6	LNB250M6C193KEE6
22000	76*130	14.8	18.2	LNB200M6C223KED0	21000	89*130	15.1	18.7	LNB250M6C213KFD0		
24000	76*140	13.3	19.5	LNB200M6C243KEE0	23000	89*140	13.4	20.4	LNB250M6C233KFE0		
25000	89*115	15.3	20.5	LNB200M6C253KFB5	24000	89*146	12.9	21.4	LNB250M6C243KFE6		
26000	76*146	12.7	19.7	LNB200M6C263KEE6	27000	76*192	9.5	27.2	LNB250M6C273KEK2		
28000	89*130	13.4	19.8	LNB200M6C283KFD0	30000	76*218	7.0	29.6	LNB250M6C303KEN8		
31000	89*140	12.0	21.6	LNB200M6C313KFE0	33000	89*192	10.6	26.2	LNB250M6C333KFK2		
33000	76*192	10.8	23.7	LNB200M6C333KEK2	38000	89*218	9.2	28.8	LNB250M6C383KFN8		
33000	89*146	11.5	22.7	LNB200M6C333KFE6	300V 350SV	330	35*40	418.1	1.4	LNB300M5B331KA40	
37000	76*218	9.6	25.2	LNB200M6C373KEN8		600	35*55	231.4	2.1	LNB300M5B601KA55	
44000	89*192	9.3	28.2	LNB200M6C443KFK2		730	35*65	188.8	2.5	LNB300M5B731KA65	
51000	89*218	7.9	31.1	LNB200M6C513KFN8		1000	35*80	137.5	3.1	LNB300M5B102KA80	
250V 300SV	470	35*40	259.7	1.8		LNB250M5B471KA40	1000	35*55	139.3	3.2	LNB300M5B102KA55
	820	35*55	156.4	2.5		LNB250M5B821KA55	1200	35*65	117.2	3.7	LNB300M5B122KA65
	1200	35*65	118.7	3.1		LNB250M5B122KA65	1200	50*55	131.1	3.6	LNB300M5B122KC55
	1400	35*55	99.0	3.6		LNB250M5B142KA55	1300	35*90	106.8	4.2	LNB300M5B132KA90
	1500	35*80	88.0	4.1	LNB250M5B152KA80	1500	35*105	90.4	4.7	LNB300M5B152KAA5	
	1800	35*65	83.3	4.4	LNB250M5B182KA65	1500	50*65	102.6	3.6	LNB300M5B152KC65	
	1800	50*55	94.7	4.3	LNB250M5B182KC55	1700	35*80	84.5	4.3	LNB300M5B172KA80	
1900	35*90	69.5	5.2	LNB250M5B192KA90	1800	35*115	77.4	4.7	LNB300M5B182KAB5		



300V 350SV	2100	35*130	65.7	5.4	LNB300M5B212KAD0	350V 400SV	1800	35*105	79.9	5.8	LNB350M5B182KAA5
	2100	35*90	68.3	5.6	LNB300M5B212KA90		1900	50*90	79.2	4.4	LNB350M5B192KC90
	2200	50*80	71.1	5.7	LNB300M5B222KC80		2000	65*65	86.9	4.6	LNB350M6C202KD65
	2300	35*140	60.3	6.4	LNB300M5B232KAE0		2100	35*115	67.8	5.5	LNB350M5B212KAB5
	2600	35*105	56.7	6.8	LNB300M5B262KAA5		2300	50*105	65.1	5.9	LNB350M5B232KCA5
	2600	65*65	60.5	5.1	LNB300M6C262KD65		2400	35*130	59.1	6.5	LNB350M5B242KAD0
	2800	50*90	55.5	5.7	LNB300M5B282KC90		2500	65*80	61.0	6.6	LNB350M6C252KD80
	3000	35*115	48.5	6.5	LNB300M5B302KAB5		2700	35*140	52.4	7.4	LNB350M5B272KAE0
	3300	65*80	46.5	7.0	LNB300M6C332KD80		2700	50*115	55.4	7.5	LNB350M5B272KCB5
	3400	50*105	45.7	7.4	LNB300M5B342KCA5		3100	50*130	48.7	7.0	LNB350M5B312KCD0
	3500	35*130	42.5	8.0	LNB300M5B352KAD0		3100	65*90	48.5	7.5	LNB350M6C312KD90
	3900	35*140	37.9	8.7	LNB300M5B392KAE0		3500	50*140	42.8	8.3	LNB350M5B352KCE0
	4000	50*115	38.9	8.9	LNB300M5B402KCB5		3700	65*105	39.9	9.0	LNB350M6C372KDA5
	4200	65*90	38.1	7.9	LNB300M6C422KD90		3800	76*80	54.0	8.1	LNB350M6C382KE80
	4600	50*130	34.0	8.9	LNB300M5B462KCD0		4200	65*115	34.0	10.5	LNB350M6C422KDB5
	4800	76*80	42.8	8.4	LNB300M6C482KE80		4600	76*90	41.7	9.8	LNB350M6C462KE90
	5200	65*105	29.9	10.4	LNB300M6C522KDA5		4800	65*130	29.6	10.7	LNB350M6C482KDD0
	5300	50*140	30.2	10.8	LNB300M5B532KCE0		5400	65*140	26.2	11.9	LNB350M6C542KDE0
	6000	76*90	34.0	10.5	LNB300M6C602KE90		5500	76*105	34.7	10.8	LNB350M6C552KEA5
	6100	65*115	25.5	12.5	LNB300M6C612KDB5		6300	76*115	29.6	12.2	LNB350M6C632KEB5
	7100	65*130	22.2	12.3	LNB300M6C712KDD0		7200	76*130	25.8	13.4	LNB350M6C722KED0
	7400	76*105	26.2	11.9	LNB300M6C742KEA5		7700	89*105	29.9	12.8	LNB350M6C772KFA5
	8000	65*140	19.8	14.3	LNB300M6C802KDE0		8200	76*140	22.9	14.9	LNB350M6C822KEE0
	8700	76*115	23.6	13.6	LNB300M6C872KEB5		8400	76*146	21.7	17.2	LNB350M6C842KEE6
	10000	76*130	20.5	15.1	LNB300M6C103KED0		8800	89*115	25.7	13.8	LNB350M6C882KFB5
	10000	89*105	21.0	15.3	LNB300M6C103KFA5		10000	89*130	22.5	15.3	LNB350M6C103KFD0
	11000	76*140	18.0	16.8	LNB300M6C113KEE0		11000	76*192	17.1	19.1	LNB350M6C113KEK2
	12000	76*146	17.0	19.5	LNB300M6C123KEE6		11000	89*140	20.0	16.7	LNB350M6C113KFE0
	12000	89*115	18.2	16.4	LNB300M6C123KFB5		12000	89*146	18.9	17.7	LNB350M6C123KFE6
	13000	89*130	16.0	18.1	LNB300M6C133KFD0		13000	76*218	14.2	20.7	LNB350M6C133KEN8
15000	89*140	14.3	19.8	LNB300M6C153KFE0	16000	89*192	14.9	22.3	LNB350M6C163KFK2		
16000	76*192	13.2	21.8	LNB300M6C163KEK2	18000	89*218	12.4	24.8	LNB350M6C183KFN8		
16000	89*146	13.5	20.9	LNB300M6C163KFE6	180	35*40	652.4	1.1	LNB400M5B181KA40		
19000	76*218	10.8	23.7	LNB300M6C193KEN8	350	35*55	408.2	1.6	LNB400M5B351KA55		
22000	89*192	11.0	25.9	LNB300M6C223KFK2	420	35*65	272.6	2.1	LNB400M5B421KA65		
26000	89*218	9.3	28.6	LNB300M6C263KFN8	570	35*80	204.8	2.5	LNB400M5B571KA80		
350V 400SV	220	35*40	605.4	1.2	LNB350M5B221KA40	630	35*55	189.5	2.8	LNB400M5B631KA55	
	430	35*55	378.5	1.6	LNB350M5B431KA55	710	35*90	164.3	3.1	LNB400M5B711KA90	
	510	35*65	253.0	2.1	LNB350M5B511KA65	760	35*65	173.7	3.2	LNB400M5B761KA65	
	680	35*80	190.2	2.6	LNB350M5B681KA80	820	50*55	179.3	3.2	LNB400M5B821KC55	
	760	35*55	176.6	2.9	LNB350M5B761KA55	850	35*105	137.3	3.8	LNB400M5B851KAA5	
	860	35*90	152.5	3.2	LNB350M5B861KA90	1000	35*115	118.0	3.4	LNB400M5B102KAB5	
	920	35*65	161.7	3.3	LNB350M5B921KA65	1000	35*80	134.0	3.4	LNB400M5B102KA80	
	990	50*55	167.6	3.3	LNB350M5B991KC55	1000	50*65	141.7	3.5	LNB400M5B102KC65	
	1000	35*105	127.5	4.0	LNB350M5B102KAA5	1100	35*130	104.6	4.3	LNB400M5B112KAD0	
	1200	35*115	109.6	3.5	LNB350M5B122KAB5	1200	35*140	92.4	4.8	LNB400M5B122KAE0	
	1200	35*80	124.7	3.5	LNB350M5B122KA80	1200	35*90	106.6	4.6	LNB400M5B122KA90	
	1200	50*65	132.2	3.6	LNB350M5B122KC65	1300	50*80	108.9	4.8	LNB400M5B132KC80	
	1300	35*130	97.2	4.5	LNB350M5B132KAD0	1500	35*105	85.8	5.6	LNB400M5B152KAA5	
	1500	35*140	85.9	5.0	LNB350M5B152KAE0	1600	50*90	85.0	4.3	LNB400M5B162KC90	
	1500	35*90	97.3	4.9	LNB350M5B152KA90	1700	35*115	74.3	4.9	LNB400M5B172KAB5	
1500	50*80	101.5	4.9	LNB350M5B152KC80	1700	65*65	93.1	4.7	LNB400M6C172KD65		



400V 450SV	1900	50*105	69.8	5.7	LNB400M5B192KCA5	450V 500SV	1800	50*115	76.0	6.4	LNB450M5B182KCB5
	2000	35*130	63.4	6.3	LNB400M5B202KAD0		1900	50*130	66.8	6.0	LNB450M5B192KCD0
	2100	65*80	65.3	6.4	LNB400M6C212KD80		2000	65*90	66.5	6.4	LNB450M6C202KD90
	2200	35*140	57.3	7.1	LNB400M5B222KAE0		2200	50*140	58.6	7.1	LNB450M5B222KCE0
	2300	50*115	59.3	7.2	LNB400M5B232KCB5		2400	65*105	54.7	7.7	LNB450M6C242KDA5
	2600	50*130	52.2	6.8	LNB400M5B262KCD0		2500	76*80	65.7	7.3	LNB450M6C252KE80
	2600	65*90	52.0	7.2	LNB400M6C262KD90		2800	65*115	46.4	9.0	LNB450M6C282KDB5
	2900	50*140	45.9	8.1	LNB400M5B292KCE0		3000	76*90	52.2	8.7	LNB450M6C302KE90
	3100	65*105	42.8	8.7	LNB400M6C312KDA5		3300	65*130	40.4	9.2	LNB450M6C322KDD0
	3200	76*80	57.5	7.8	LNB400M6C322KE80		3900	65*140	35.4	10.3	LNB450M6C392KDE0
	3900	65*115	35.6	10.3	LNB400M6C392KDB5		3900	76*105	40.1	10.1	LNB450M6C392KEA5
	3900	76*90	44.9	9.4	LNB400M6C392KE90		4100	76*115	37.5	10.8	LNB450M6C412KEB5
	4000	65*130	31.7	10.3	LNB400M6C402KDD0		4700	76*130	32.5	12.0	LNB450M6C472KED0
	4700	65*140	28.1	11.5	LNB400M6C472KDE0		5000	89*105	31.8	12.5	LNB450M6C502KFA5
	4700	76*105	37.0	10.5	LNB400M6C472KEA5		5600	76*140	28.8	13.3	LNB450M6C562KEE0
	5300	76*115	31.5	11.8	LNB400M6C532KEB5		5800	76*146	27.3	15.4	LNB450M6C582KEE6
	6000	76*130	27.4	13.0	LNB400M6C602KED0		5800	89*115	27.0	13.5	LNB450M6C582KFB5
	6400	89*105	31.9	12.4	LNB400M6C642KFA5		6800	89*130	23.5	15.0	LNB450M6C682KFD0
	6800	76*140	24.4	14.4	LNB400M6C682KEE0		7300	89*140	21.1	16.3	LNB450M6C732KFE0
	7100	76*146	23.1	16.7	LNB400M6C712KEE6		7700	89*146	20.0	17.2	LNB450M6C772KFE6
7400	89*115	27.4	13.4	LNB400M6C742KFB5	7900	76*192	21.3	17.1	LNB450M6C792KEK2		
8400	89*130	23.9	14.8	LNB400M6C842KFD0	9000	76*218	17.6	18.6	LNB450M6C902KEN8		
9400	89*140	21.2	16.2	LNB400M6C942KFE0	10000	89*192	15.9	21.6	LNB450M6C103KFK2		
9600	76*192	18.2	18.6	LNB400M6C962KEK2	12000	89*218	13.3	24.0	LNB450M6C123KFN8		
9900	89*146	20.1	17.2	LNB400M6C992KFE6	110	35*40	1224.3	0.8	LNB500M5B111KA40		
11000	76*218	15.1	20.1	LNB400M6C113KEN8	180	35*55	736.9	1.2	LNB500M5B181KA55		
13000	89*192	15.8	21.7	LNB400M6C133KFK2	240	35*65	556.5	1.4	LNB500M5B241KA65		
15000	89*218	13.1	24.1	LNB400M6C153KFN8	270	35*55	498.4	1.6	LNB500M5B271KA55		
450V 500SV	150	35*40	796.7	1.0	LNB450M5B151KA40	320	35*80	409.7	1.9	LNB500M5B321KA80	
	270	35*55	437.7	1.5	LNB450M5B271KA55	340	50*55	393.1	2.0	LNB500M5B341KC55	
	350	35*65	337.1	1.8	LNB450M5B351KA65	380	35*65	347.2	2.2	LNB500M5B381KA65	
	460	35*55	264.2	2.2	LNB450M5B461KA55	400	35*90	338.1	2.4	LNB500M5B401KA90	
	470	35*80	253.2	2.4	LNB450M5B471KA80	470	50*65	273.9	2.7	LNB500M5B471KC65	
	560	35*90	203.0	2.8	LNB450M5B561KA90	480	35*105	293.2	2.1	LNB500M5B481KAA5	
	570	35*65	213.1	2.9	LNB450M5B571KA65	500	35*80	264.5	2.4	LNB500M5B501KA80	
	590	50*55	228.4	2.9	LNB450M5B591KC55	560	35*115	261.2	2.6	LNB500M5B561KAB5	
	680	35*105	169.5	3.4	LNB450M5B681KAA5	640	35*130	231.1	2.9	LNB500M5B641KAD0	
	740	35*80	164.5	2.8	LNB450M5B741KA80	650	35*90	202.0	3.2	LNB500M5B651KA90	
	780	50*65	178.0	2.9	LNB450M5B781KC65	700	50*80	200.1	3.4	LNB500M5B701KC80	
	820	35*115	145.6	3.5	LNB450M5B821KAB5	720	35*140	195.4	3.6	LNB500M5B721KAE0	
	920	35*90	130.9	3.8	LNB450M5B921KA90	790	35*105	172.4	3.9	LNB500M5B791KAA5	
	930	35*130	127.7	4.1	LNB450M5B931KAD0	800	65*65	170.6	3.0	LNB500M6C801KD65	
	1000	35*140	113.9	4.5	LNB450M5B102KAE0	860	50*90	159.1	3.4	LNB500M5B861KC90	
	1000	50*80	137.0	4.3	LNB450M5B102KC80	930	35*115	149.1	3.7	LNB500M5B931KAB5	
	1100	35*105	107.4	5.0	LNB450M5B112KAA5	1000	50*105	138.7	4.1	LNB500M5B102KCA5	
	1200	50*90	109.0	3.8	LNB450M5B122KC90	1100	35*130	129.6	4.4	LNB500M5B112KAD0	
	1200	65*65	115.8	4.0	LNB450M6C122KD65	1100	65*80	122.0	4.7	LNB500M6C112KD80	
	1300	35*115	91.1	4.7	LNB450M5B132KAB5	1200	35*140	114.7	5.0	LNB500M5B122KAE0	
1500	35*130	79.2	5.4	LNB450M5B152KAD0	1200	50*115	117.7	5.1	LNB500M5B122KCB5		
1500	50*105	89.5	5.3	LNB450M5B152KCA5	1400	50*130	102.3	4.8	LNB500M5B142KCD0		
1700	35*140	70.2	6.2	LNB450M5B172KAE0	1400	65*90	95.1	5.3	LNB500M6C142KD90		
1700	65*80	81.1	6.0	LNB450M6C172KD80	1500	50*140	93.3	5.7	LNB500M5B152KCE0		



500V 550SV	1700	65*105	79.7	6.4	LNB500M6C172KDA5	500V	5700	89*146	26.0	15.1	LNB500M6C572KFE6	
	1700	76*80	86.4	6.4	LNB500M6C172KE80		5700	76*192	27.9	15.0	LNB500M6C572KEK2	
	2100	65*130	61.1	7.8	LNB500M6C212KDD0		550SV	6600	76*218	23.1	16.2	LNB500M6C662KEN8
	2200	65*115	68.3	7.6	LNB500M6C222KDB5			7900	89*192	20.5	19.1	LNB500M6C792KFK2
	2200	76*90	67.4	7.1	LNB500M6C222KE90			9200	89*218	16.7	21.4	LNB500M6C922KFN8
	2500	65*140	54.7	8.3	LNB500M6C252KDE0	550V 600SV	1400	65*105	170.5	4.9	LNB550M6C142KDA5	
	2500	76*105	55.4	8.6	LNB500M6C252KEA5		1700	65*115	132.6	5.9	LNB550M6C172KDB5	
	3000	76*115	48.1	9.5	LNB500M6C302KEB5		1900	65*130	111.7	6.8	LNB550M6C192KDD0	
	3400	76*130	43.1	10.4	LNB500M6C342KED0		2200	76*105	90.4	7.8	LNB550M6C222KEA5	
	3500	89*105	40.1	11.1	LNB500M6C352KFA5		2300	65*140	86.5	7.8	LNB550M6C232KDE0	
	3900	76*140	37.5	11.6	LNB500M6C392KEE0		2500	76*115	79.6	8.4	LNB550M6C252KEB5	
	4100	76*146	35.5	13.5	LNB500M6C412KEE6		2900	76*130	64.0	9.7	LNB550M6C292KED0	
	4100	89*115	34.1	12.0	LNB500M6C412KFB5		3400	76*140	54.6	10.9	LNB550M6C342KEE0	
	4800	89*130	30.0	13.2	LNB500M6C482KFD0		3700	76*146	50.2	12.2	LNB550M6C372KEE6	
	5400	89*140	28.0	14.2	LNB500M6C542KFE0		5100	76*192	36.4	16.2	LNB550M6C512KEK2	

RTED RIPPLE CURRENT MUIERS

The ripple frequency and standard list of the specified value is not at the same time, please use the value is less than the following

● Frequency Multiplier

Frequency (HZ)	50	120	300	1K	3K
coefficient	0.8	1.0	1.1	1.3	1.4

Note : The endurance of capacitors is shorted with internal heating produced by ripple current at the rate of halving the lifetime with every 5 to 10°C rise. When long life performance is required in actual use, the rms ripple current has to be reduced. Also, for the LB series capacitors, using them at operating voltage less than their rated voltage can extend their lifetime. For the details, please contact representative of capsun